

[www.ttpack.com.pl](http://www.ttpack.com.pl)

A strong partner for your business

**Large Stock**  
fast shipping



 **PACK**  
packaging solutions



## ABOUT US

TTpack is an online store that sells high-quality coffee packaging. It is made up of a team of experienced experts who are happy to help customers choose the most appropriate products. Our rich offer was created as a result of cooperation only with the best producers of flat bottom and stand up pouches, thanks to which our products are always distinguished by the highest quality. At TTpack, we always put the customer first. That is why we choose only the highest quality products, but we also make sure that the price remains attractive.

Our doypack store also provides express order fulfillment. We guarantee fast shipping, also abroad. After all, time is money, right? ;) If we receive the payment by 12.00, we will ship the order the same day.

Choose a packaging store run by professionals! If you want to work with the best - you've come to the right place. We know a lot about coffee and we know what packaging is best for it. You can trust that we provide you with the highest quality bags of various types - doypacks, bags with a flat bottom, with or without valve. Our team is at your disposal. Please feel free to contact us if you have any questions. TTpack has a very large storage area that can accommodate many flat bottom packages and stand up pouches. Thanks to this, we can manage both small and large orders, and the time of preparing the shipment is limited to the necessary minimum. We work with companies but also with individual clients. We want our customers to be satisfied with each order placed in our store.

Choosing TTpack you get a satisfaction guarantee, which is confirmed by our customers. Their satisfaction proves that we are reliable, and our doypack coffee packages are distinguished by the highest quality. Familiarize yourself with our rich offer and join the ranks of our satisfied customers today!

## CUSTOMERS OPINION

*„Fast, professional, trouble-free – these three words literally describe cooperation with this company. I was ordering coffee packaging numerous times and I was never disappointed.”*

*„We ordered a packaging already the third time. Everything goes fast and without any problems. We highly recommend.”*



+48 515 402 118



biuro@tppack.com.pl



www.tppack.com.pl

# FLAT BOTTOM BLACK KRAFT

Capacity	150g	250g	500g	1000g
Dimensions	105x190x60	122x202x82	132x257x92	147x342x92
Material	BlackPaper80/KPET14/PE50	BlackPaper80/KPET14/PE50	BlackPaper80/KPET14/PE50	BlackPaper80/KPET14/PE50
Color	Black kraft	Black kraft	Black kraft	Black kraft
Valve	Yes/ No	Yes/ No	Yes/ No	Yes/ No

## PRINTING POSSIBILITIES



hot stamping



screen printing



full print



OFLBBK150CHBW  
(without valve)

OFLBBK150CH  
(with valve)



OFLBBK250CHBW  
(without valve)

OFLBBK250CH  
(with valve)



OFLBBK500CHBW  
(without valve)

OFLBBK500CH  
(with valve)



OFLBBK1CHBW  
(without valve)

OFLBBK1CH  
(with valve)

# FLAT BOTTOM WHITE KRAFT

<b>Capacity</b>	250g	500g	1000g
<b>Dimensions</b>	122x202x82	132x257x92	147x342x92
<b>Material</b>	WhitePaper80/PET14/PE50	WhitePaper80/PET14/PE50	WhitePaper80/PET14/PE50
<b>Color</b>	White kraft	White kraft	White kraft
<b>Valve</b>	Yes/ No	Yes/ No	Yes/ No

## PRINTING POSSIBILITIES



hot stamping



screen printing



full print



OFLBWK250CHBW  
(without valve)

OFLBWK250CH  
(with valve)



OFLBWK500CHBW  
(without valve)

OFLBWK500CH  
(with valve)



OFLBWK1CHBW  
(without valve)

OFLBWK1CH  
(with valve)

# FLAT BOTTOM BLACK MAT, WHITE MAT AND KRAFT

Capacity	150g	250g	500g	1000g
Dimensions	105x190x60	120x200x80	130x255x90	145x340x90
Material for black and white packaging	BOPP25/vmpet12/PE101	BOPP25/vmpet12/PE101	BOPP25/vmpet12/PE101	BOPP25/vmpet12/PE101
Material for kraft packaging	Kraft paper60/AI7/PET12/PE80	Kraft paper60/AI7/PET12/PE80	Kraft paper60/AI7/PET12/PE80	Kraft paper60/AI7/PET12/PE80
Color	Black mat/White mat/Kraft	Black mat/White mat/Kraft	Black mat/White mat/Kraft	Black mat/White mat/Kraft
Valve	Yes/ No	Yes/ No	Yes/ No	Yes/ No

## PRINTING POSSIBILITIES



hot stamping



screen printing



full print





OFLBB150CHBW  
(without valve)



OFLBW150CHBW  
(without valve)



OFLBK150CHBW  
(without valve)

OFLBB150CH  
(with valve)

OFLBW150CH  
(with valve)

OFLBK150CH  
(with valve)



OFLBB250CHBWNEW  
(without valve)



OFLBW250CHBWNEW  
(without valve)



OFLBK250CHBW  
(without valve)

OFLBB250CHNEW  
(with valve)

OFLBW250CHNEW  
(with valve)

OFLBK250CH  
(with valve)



OFLBB500CHBWNEW  
(without valve)



OFLBW500CHBWNEW  
(without valve)



OFLBK500CHBW  
(without valve)

OFLBB500CHNEW  
(with valve)

OFLBW500CHNEW  
(with valve)

OFLBK500CH  
(with valve)



OFLBB1CHBWNEW  
(without valve)



OFLBW1CHBWNEW  
(without valve)



OFLBK1CHBW  
(without valve)

OFLBB1CHNEW  
(with valve)

OFLBW1CHNEW  
(with valve)

OFLBK1CH  
(with valve)

# FLAT BOTTOM REGULAR ZIPPER

## KRAFT, BLACK MAT

Capacity	250g	500g	1000g
Dimensions	140x215x65	160x260x75	180x305x85
Material for black mat packaging	BOPP25/vmpet12/PE101	BOPP25/vmpet12/PE101	BOPP25/vmpet12/PE101
Material for kraft packaging	Kraft paper60/Al7/PET12/PE80	Kraft paper60/Al7/PET12/PE80	Kraft paper60/Al7/PET12/PE80
Color	Black mat/Kraft	Black mat/Kraft	Black mat/Kraft
Valve	Yes/ No	Yes/ No	Yes/ No

### PRINTING POSSIBILITIES



hot stamping



screen printing



full print



OFLBRZK250BW  
(without valve)

OFLBRZK250  
(with valve)



OFLBRZK500BW  
(without valve)

OFLBRZK500  
(with valve)



OFLBRZK1BW  
(without valve)

OFLBRZK1  
(with valve)



OFLBRZB250BW  
(without valve)

OFLBRZB250  
(with valve)



OFLBRZB500BW  
(without valve)

OFLBRZB500  
(with valve)



OFLBRZB1BW  
(without valve)

OFLBRZB500  
(with valve)



# FLAT BOTTOM REGULAR ZIPPER

## RECYCLABLE, COMPOSTABLE

Capacity	250g	500g	1000g
Dimensions	140x215x65	160x260x75	180x305x85
Material for recyclable packaging	PE100/PEEVOH50	PE100/PEEVOH50	PE100/PEEVOH50
Material for compostable packaging	WhitePaper50/MilkyPLA40	WhitePaper50/MilkyPLA40	WhitePaper50/MilkyPLA40
Color	Black mat/White kraft	Black mat/White kraft	Black mat/White kraft
Valve	Yes/ No	Yes/ No	Yes/ No

### PRINTING POSSIBILITIES



screen printing



full print



OFLBRZBR250BW  
(without valve)

OFLBRZBR250  
(with valve)



OFLBRZBR500BW  
(without valve)

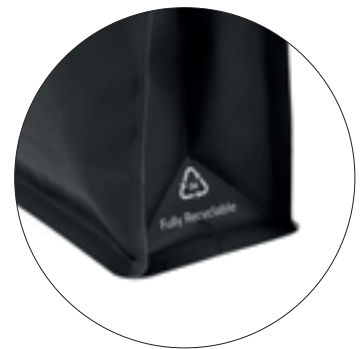
OFLBRZBR500  
(with valve)



OFLBRZBR1BW  
(without valve)

OFLBRZBR1  
(with valve)

### FULLY RECYCLABLE



### FULLY COMPOSTABLE



BIOOFLBRZK250CHBW  
(without valve)

BIOOFLBRZK250CH  
(with valve)



BIOOFLBRZK500CHBW  
(without valve)

BIOOFLBRZK500CH  
(with valve)



BIOOFLBRZK1CHBW  
(without valve)

BIOOFLBRZK1CH  
(with valve)

# DOYPACK BLACK KRAFT

Capacity	70g	150g	250g	500g	1000g
Dimensions	110x170x70	130x210x40	160x230x90	190x265x100	230x340x120
Material	BlackKraftPaper80/ KPET14/PE50	BlackKraftPaper80/ KPET14/PE50	BlackKraftPaper80/ KPET14/PE50	BlackKraftPaper80/ KPET14/PE50	BlackKraftPaper80/ KPET14/PE50
Color	Black kraft	Black kraft	Black kraft	Black kraft	Black kraft
Valve	Yes/ No	Yes/ No	Yes/ No	Yes/ No	Yes/ No

## PRINTING POSSIBILITIES



hot stamping



screen printing



full print



# DOYPACK BLACK KRAFT



ODPBK70CHBW  
(without valve)

ODPBK70CH  
(with valve)



ODPBK150CHBW  
(without valve)

ODPBK150CH  
(with valve)



ODPBK250CHBW  
(without valve)

ODPBK250CH  
(with valve)



ODPBK500CHBW  
(without valve)

ODPBK500CH  
(with valve)



ODPBK1CHBW  
(without valve)

ODPBK1CH  
(with valve)

# DOYPACK KRAFT

Capacity	70g	150g	250g	500g	1000g
Dimensions	110x170x70	130x210x80	160x230x90	190x260x110	235x335x110
Material	Kraft paper60/ vmpet12/PE60	Kraft paper60/ vmpet12/PE60	Kraft paper60/ vmpet12/PE60	Kraft paper60/ vmpet12/PE60	Kraft paper60/ vmpet12/PE60
Color	Kraft	Kraft	Kraft	Kraft	Kraft
Valve	Yes/ No	Yes/ No	Yes/ No	Yes/ No	Yes/ No

## PRINTING POSSIBILITIES



hot stamping



screen printing



digital full print



# DOYPACK KRAFT



ODPK70CHBWNEW  
(without valve)

ODPK70CHNEW  
(with valve)



ODPK150CHBWNEW  
(without valve)

ODPK150CHNEW  
(with valve)



ODPK250CHBWNEW  
(without valve)

ODPK250CHNEW  
(with valve)



ODPK500CHBWNEW  
(without valve)

ODPK500CHNEW  
(with valve)



ODPK1CHBWNEW  
(without valve)

ODPK1CHNEW  
(with valve)



ODPK3CHBW  
(without valve)

ODPK3CH  
(with valve)

# DOYPACK COMPOSTABLE

Capacity	70g	150g	250g	500g	1000g
Dimensions	110x170x70	130x210x80	160x230x90	190x265x100	230x340x120
Material	BrownKraftPaper50/ MilkyPLA40	BrownKraftPaper50/ MilkyPLA40	BrownKraftPaper50/ MilkyPLA40	BrownKraftPaper50/ MilkyPLA40	BrownKraftPaper50/ MilkyPLA40
Color	Kraft	Kraft	Kraft	Kraft	Kraft
Valve	Yes/ No	Yes/ No	Yes/ No	Yes/ No	Yes/ No

## PRINTING POSSIBILITIES



hot stamping



screen printing



digital full print



# DOYPACK COMPOSTABLE



BLOODPK70CHBW  
(without valve)

BLOODPK70CH  
(with valve)



BLOODPK150CHBW  
(without valve)

BLOODPK150CH  
(with valve)



BLOODPK250CHBW  
(without valve)

BLOODPK250CH  
(with valve)



BLOODPK500CHBW  
(without valve)

BLOODPK500CH  
(with valve)



BLOODPK1CHBW  
(without valve)

BLOODPK1CH  
(with valve)

# DOYPACK

## KRAFT WITH WINDOW

Capacity	25g	50g	150g	250g	500g
Dimensions	85x145x50	110x185x70	130x225x70	160x270x80	200x300x100
Material	40KRAFT+12PET+60CPP	40KRAFT+12PET+60CPP	40KRAFT+12PET+60CPP	40KRAFT+12PET+60CPP	40KRAFT+12PET+60CPP
Color	Kraft	Kraft	Kraft	Kraft	Kraft
Valve	No	No	No	No	No

### PRINTING POSSIBILITIES



hot stamping



screen printing





# DOYPACK

## KRAFT WITH WINDOW



ODPK25WCH  
(without valve)



ODPK50WCH  
(without valve)



ODPK150WCH  
(without valve)



ODPK250WCH  
(without valve)



ODPK500WCH  
(without valve)

# K-SEAL

Capacity	350g
Dimensions	190x200x70
Material	PE / PeEVOH
Color	Black, White, Green, Yellow, Grey, Blue
Valve	Yes/ No

## PRINTING POSSIBILITIES



screen printing





OKSB350BW  
(without valve)

OKSB350  
(with valve)



OKSW350BW  
(without valve)

OKSW350  
(with valve)



OKSGS350BW  
(without valve)

OKSGS350  
(with valve)



OKSYA350BW  
(without valve)

OKSYA350  
(with valve)



OKSG350BW  
(without valve)

OKSG350  
(with valve)



OKSBB350BW  
(without valve)

OKSBB350  
(with valve)

## FULLY RECYCLABLE



# SIDE GUSSET AND STABILO

<b>Capacity</b>	1000g	1000g	1000g
<b>Color</b>	Kraft	Black	Brown
<b>Dimensions</b>	135x360x70	150x380x80	135x360x70
<b>Material</b>	PAP60/vmpet12/PE60	OPP20mat/PETmet12/PE60	PET12/ALU8/PE80
<b>SKU</b>	OSGK1CHBW (no valve) OSGK1CH (valve)	OSTB1BW (no valve) OSTB1 (valve)	OSGBR1BW (no valve) OSGBR1 (valve)
<b>Valve</b>	Yes/ No	Yes/ No	Yes/ No

## PRINTING POSSIBILITIES



screen printing



full print



OSGK1CHBW  
(without valve)

OSGK1CH  
(with valve)



OSTB1BW  
(without valve)

OSTB1  
(with valve)



OSGBR1BW  
(without valve)

OSGBR1  
(with valve)

# LARGE SIZES

Capacity	5kg	10 - 12kg	20 - 25kg
Dimensions	25x60x14,5 cm	38x78x16 cm	60x110x22 cm
Material	12PET+8Alu+80PE	Paper60/PET12/PA15/AL7/PE103	KraftPaper/LDPE25
Color	Silver	Kraft	Kraft
Valve	Yes/ No	Yes/ No	No



OSTS5CHBW  
(without valve)

OSTK10CHBWS  
(without valve)

WDP20PL  
(without valve)

OSTS5CH  
(with valve)

OSTK10CHBWS  
(with valve)

-

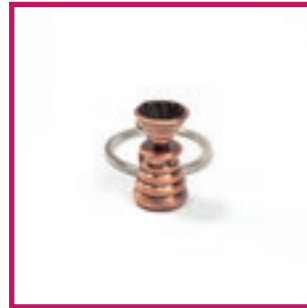
# KEYCHAINS



BR1SILVER



BR2BLACK



BR3COPPER



BR4ROSEGOLD



BR5BLACKMAT



BR6BLACKMAT



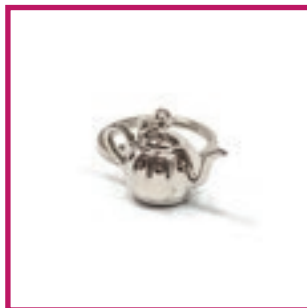
BR7COPPER



BR8COPPER



BR9SILVER



BR10SILVER



BR11SILVER



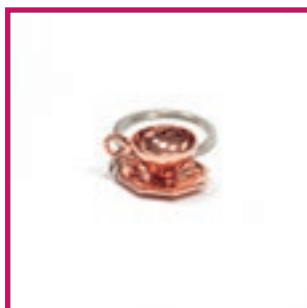
BR12BLACK



BR13SILVER



BR14SILVER



BR15ROSEGOLD



BR16BLACK



# MARKING TECHNIQUE

## HOT STAMPING

*symbol:*



more info on page 26



## SCREEN PRINTING

*symbol:*



more info on page 28





# PRINTING POSSIBILITIES

## DIGITAL FULL PRINT

*symbol:*



more info on page 30



## ROTOGRAVURE

*symbol:*



more info on page 32



# HOT STAMPING

**HOT STAMPING** - marking technique with the use of hot-stamping foil and convex matrices made of heat-conducting material. Heat and a special hot-stamping foil play an important role in this process. Thanks to the foil, it is possible to emboss patterns at high temperature, but a matrix is needed for this. We use matrix of the highest quality - brass, deeply milled. Hot-stamping is a dry method. Thanks to this, it is simple and also more environmentally friendly, it does not require e.g. mixing paints. The method is used for decorative prints, it allows you to obtain various forms of refinement on objects and materials. Offers a gilding effect. Most often we make prints in gold, silver and copper, but there are more color options (everything depends on the material of the selected packaging).

## Tips for preparing a project:

1. The design must be perfectly fitted to the graphic grid of chosen packaging.
2. Graphics must be vector.
3. All fonts must be converted to curves.
4. The project must be saved in **.pdf format** (with the processing function in the Adobe Illustrator graphics program) or in the **draft Adobe Illustrator format**.
5. The minimum thickness of lines **must be 0.25 pt** and the minimum size of fonts **must be 10 pt**.

## Stages of order fulfillment:

1. Download of the graphic grid by the customer.
2. Preparation of the project by the client in accordance with the above-mentioned guidelines.
3. The client sends the prepared project (biuro@ttpack.com.pl).
4. Verification of the design by the TTPack Printing Department.
5. If the design has been made correctly, we send the PROFORMA invoice.
6. After receiving the payment, we send the production proof to the customers.
7. Acceptance of the production proof by the client. \*
8. Printing and shipping of packages.

\* After accepting the proof sent by us, we exclude the possibility of complaints due to errors or inappropriate content.

# HOT STAMPING



# SCREEN PRINTING

**SCREEN PRINTING** - the most important element of this method is the sieve through which the paint is forced through the squeegee. Depending on the marked material and the selected logotype / print, screens with different densities and appropriate types of paints are used. Thanks to the implementation of thousands of prints, we are able to select the appropriate type of paint and screen density to obtain a satisfactory effect. Our screen printing offer includes an overprint made in one color. There is a PANTONE palette to choose from on white or kraft packaging, silver and white color can be printed on black.

## Tips for preparing a project:

1. The design must be perfectly fitted to the graphic grid of chosen packaging.
2. Graphics must be vector.
3. All fonts must be converted to curves.
4. The project must be saved in **.pdf format** (with the processing function in the Adobe Illustrator graphics program) or in the **draft Adobe Illustrator format**.
5. The minimum thickness of lines **must be 0.25 pt** and the minimum size of fonts **must be 10 pt**.

## Stages of order fulfillment:

1. Download of the graphic grid by the customer.
2. Preparation of the project by the client in accordance with the above-mentioned guidelines.
3. The client sends the prepared project (biuro@ttpack.com.pl).
4. Verification of the design by the TTPack Printing Department.
5. If the design has been made correctly, we send the PROFORMA invoice.
6. After receiving the payment, we send the production proof to the customers.
7. Acceptance of the production proof by the client. \*
8. Printing and shipping of packages.

\* After accepting the proof sent by us, we exclude the possibility of complaints due to errors or inappropriate content.

# SCREEN PRINTING



Arabica:

Robusta:

Stopień wypalenia:

Data wypalenia\*:

Masa netto: 500g

Wyprodukowana przez Mors  
33-100 Tarnów  
ul. Graniczna 8a,  
coffee point.pl, 694 466 211

\*Najlepiej spożyć do 2 lat od daty wypalenia.

# DIGITAL FULL PRINT

**DIGITAL FULL PRINT** - printing method for individual orders. Firstly, we print the foil by the individual project and then we form the packages. Digital full print ensures perfect color mixing, their exact reproduction and excellent quality. We are able to make various packages: with a window, with metallization, with gilding. It all depends on the base of our packaging. Certainly, digital full print is distinguished by the fact that we can combine several projects in a small production spend and the production time is short, because it is only 14 working days.

## Tips for preparing a project:

1. The design must be fitted perfectly to the graphic grid of chosen packaging.
2. Graphics must be vector.
3. All fonts must be converted to curves.
4. The project must be saved in .pdf format (with the processing function in the Adobe Illustrator graphics program) or in the draft Adobe Illustrator format.

## Stages of order fulfillment:

1. Download of the graphic grid by the customer.
2. Preparation of the project by the client in accordance with the above-mentioned guidelines.
3. The client sends the prepared project (biuro@tppack.com.pl).
4. Verification of the design by the TTPack Printing Department.
5. If the design has been made correctly, we send the PROFORMA invoice to the customer for payment.
6. After receiving the payment, we send a trial proof to the customers.
7. Acceptance of the proof by the client. \*
8. Printing and shipping of packages.

\* After accepting the proof, we exclude the possibility of complaints due to inappropriate / incorrect content.

# DIGITAL FULL PRINT



# ROTOGRAVURE

**ROTOGRAVURE - FULL PRINT** - allows us to achieve the best and unique visual effects. Rotogravure is a type of gravure printing, based on a rotating system, equipped with an immersion ink system. Rotogravure technology enables the production of prints of the highest quality and is perfect for reproducing multi-colored graphics. You can print on the whole package: front, back, bottom and sides. Also sealed parts are ready to be printed on. This method requires pressure cylinder that is individual for every design.

## Tips for preparing a project:

1. The design must be fitted perfectly to the graphic grid of chosen packaging.
2. Graphics must be vector.
3. All fonts must be converted to curves.
4. The project must be saved in .pdf format (with the processing function in the Adobe Illustrator graphics program) or in the draft Adobe Illustrator format.

## Stages of order fulfillment:

1. Download of the graphic grid by the customer.
2. Preparation of the project by the client in accordance with the above-mentioned guidelines.
3. The client sends the prepared project (biuro@ttpack.com.pl).
4. Verification of the design by the TTPack Printing Department.
5. After correct verification, the Sales Department sends the documents related to the payment.
6. After receiving the payment, we send the production proof to the customers.
7. Acceptance of the production proof by the client. \*
8. Printing and shipping of packages.

\* After accepting the proof sent by us, we exclude the possibility of complaints due to errors or inappropriate content.



# ROTOGRAVURE



# LABELS

**LABELS** - the least demanding marking method. Labels are printed on self-adhesive paper that can be attached to the finished package. The printing on the labels is permanent, and thanks to the possibility of self-sticking, they leave almost unlimited possibilities of placing on the packaging. The advantage of the labels is undoubtedly the guarantee of glue strength, lead time, as well as the space needed to store the ordered labels.

## Tips for preparing a project:

1. The pattern must be fitted perfectly to the graphic grid of chosen label.
2. Graphics must be vector.
3. All fonts must be converted to curves.
4. The project must be saved in .pdf format (with the processing function in the Adobe Illustrator graphics program) or in an Adobe Illustrator draft.

## Stages of order fulfillment:

1. Preparation of the project by the client in accordance with the above guidelines.
2. The client sends the prepared project (biuro@tppack.com.pl).
3. Verification of the project by the TTPack Printing Department.
4. After correct verification, the Sales Department sends the documents related to the payment.
5. After receiving the payment, we send customers the proof of production.
6. Acceptance of the proof of production by the customer. \*
7. Printing and shipping of labels.

\* After accepting the proof we sent, we exclude the possibility of complaints due to errors or inappropriate content.





# KATALOG ONLINE



## Company information

*Company name:*

**TTPACK SPOLKA Z OGRANICZONA ODPOWIEDZIALNOSCIA**

*VAT EU Number:* **PL5482732128**

*Address (city):* **Skoczow**

*Address (street):* **BUDOWLANYCH 8**

*ZIP Code:* **43-430**

*Country:* **Poland**



+48 515 402 118



biuro@ttpack.com.pl



www.ttpack.com.pl